

domicile
EXTENDED
WARRANTY

THE DOMICILE EXTENDED WARRANTY IS A COMMITMENT TO OUR WORK, OUR TEAM AND MOST IMPORTANTLY OUR CUSTOMERS

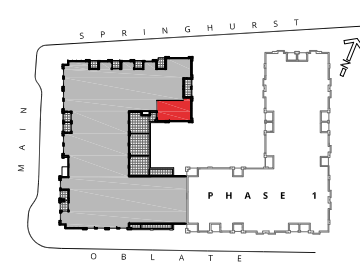
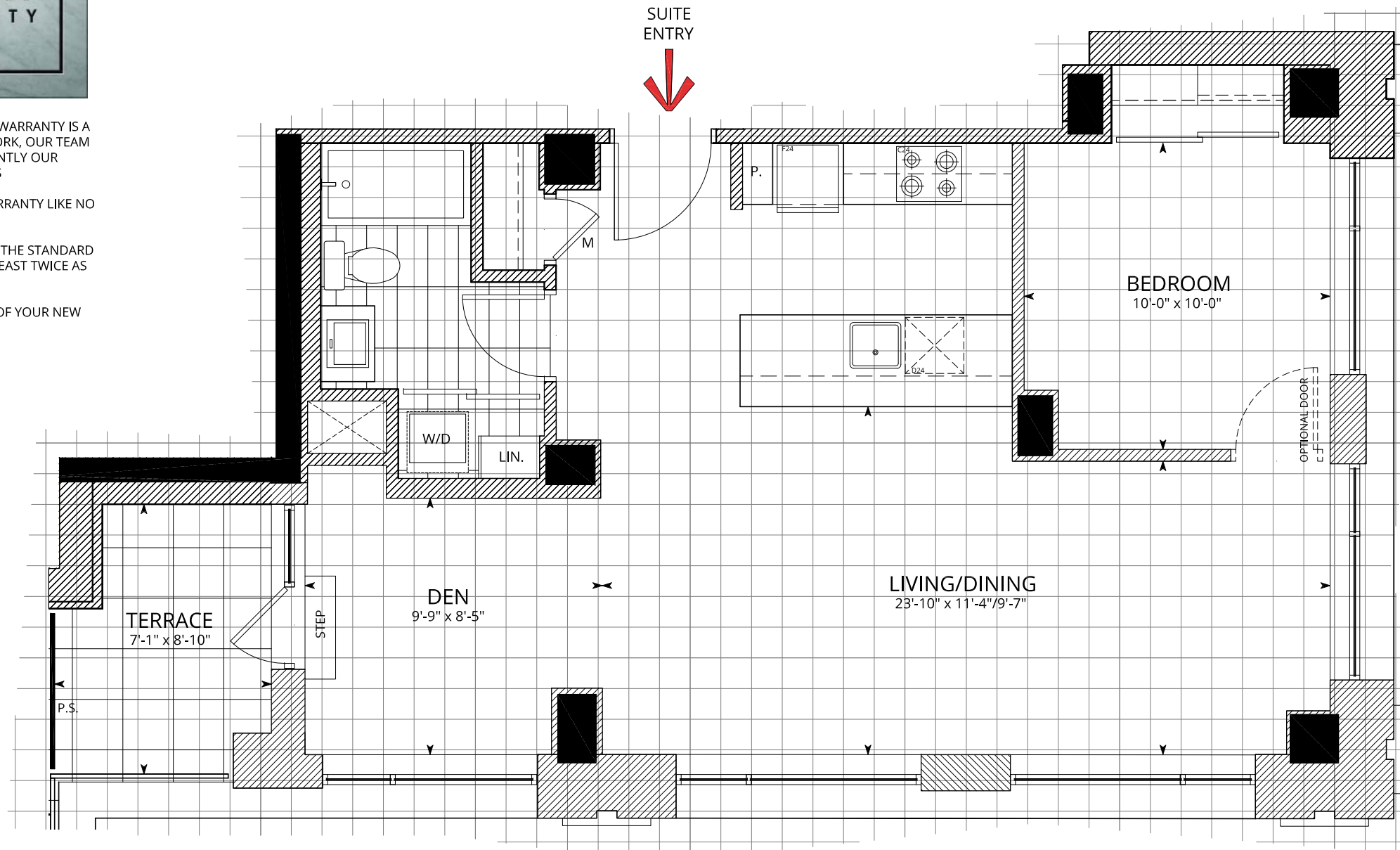
A REMARKABLE 4-YEAR WARRANTY LIKE NO OTHER

THE SAME PROTECTION AS THE STANDARD WARRANTY, BUT FOR AT LEAST TWICE AS LONG

INCLUDED IN THE PRICE OF YOUR NEW HOME

THE CAMERON

WITH TERRACE
795 sq.ft.



1 KEY PLAN
T11.1

SUITES 201

FACTS:
ONE BEDROOM + DEN
SUITE AREA: 795 sq.ft.
TERRACE AREA: 55 sq.ft.
TOTAL AREA: 850 sq.ft.

- LEGEND:
- PARTY WALLS, INTERIOR/EXTERIOR WALLS AND PLUMBING WALLS
 - STRUCTURAL ELEMENTS
 - WASHER/DRYER
 - COMBINATION WASHER/DRYER
 - HEAT PUMP/ HEAT RECOVERY VENTILATOR (HRV)
 - TUB
 - FREESTANDING TUB
 - SHOWER
 - BATHROOM VANITY
 - PEDESTAL SINK
 - WATER CLOSET
 - SINGLE BOWL UNDERMOUNT KITCHEN SINK
 - DOUBLE BOWL UNDERMOUNT KITCHEN SINK
 - DISHWASHER
D24 - 24" WIDE
D18-18" WIDE
 - COOKTOP WITH OVEN BELOW
C30 - 30" WIDE
C24 - 24" WIDE
 - REFRIGERATOR
F30 - 30" WIDE
F24 - 24" WIDE
 - PANTRY
 - LINEN CLOSET
 - MIRRORED PANEL DOOR
 - DOUBLE ROD AND SHELF
 - SINGLE ROD AND SHELF
 - TILED FLOOR
12" x 24"
 - WINDOW
 - PRIVACY SCREEN



1 THE CAMERON
T11.1

- A PROGRAM BY ENBRIDGE GAS DISTRIBUTION
- AN INTEGRATED DESIGN PROCESS WHERE BUILDING SCIENCE EXPERTS FROM ENBRIDGE AND DOMICILE'S DESIGN TEAM WORKED TOGETHER TO IDENTIFY THE OPTIMAL MIX OF DESIGN ELEMENTS AND TECHNOLOGIES TO MAXIMIZE THE ENVIRONMENTAL PERFORMANCE OF THIS PROJECT
 - THE RESULT WILL BE A BUILDING WITH ENERGY SAVINGS THAT EXCEEDS THE ONTARIO BUILDING CODE BY AT LEAST 25%
 - AFTER THE BUILDING IS COMPLETE, A COMMISSIONING REVIEW OF THE BUILDING IS CONDUCTED TO ENSURE ALL SYSTEMS AND TECHNOLOGIES ARE WORKING AS INTENDED

Actual usable space may vary slightly from stated floor area
All dimensions are approximate E. & O.E.

DESIGN NOTES/QUESTIONS:

- INCLUDES LARGE LOCKER
- OPTIONAL BEDROOM DOOR AT NO CHARGE



DRAWING TITLE:
LAYOUT FEATURES
THE CAMERON

OPTION: STANDARD DATE: 2017.08.04

REV: 02 DRAWING NO. PHASE 2 T11.1

domicile
EXTENDED
WARRANTY

THE DOMICILE EXTENDED WARRANTY IS A COMMITMENT TO OUR WORK, OUR TEAM AND MOST IMPORTANTLY OUR CUSTOMERS

A REMARKABLE 4-YEAR WARRANTY LIKE NO OTHER

THE SAME PROTECTION AS THE STANDARD WARRANTY, BUT FOR AT LEAST TWICE AS LONG

INCLUDED IN THE PRICE OF YOUR NEW HOME

THE CAMERON

795 sq.ft.

SUITES
301,401

FACTS:

ONE BEDROOM + DEN

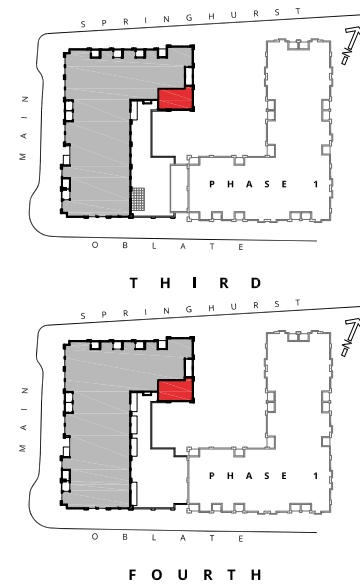
SUITE AREA: 795 sq.ft.

BALCONY AREA: N/A sq.ft.

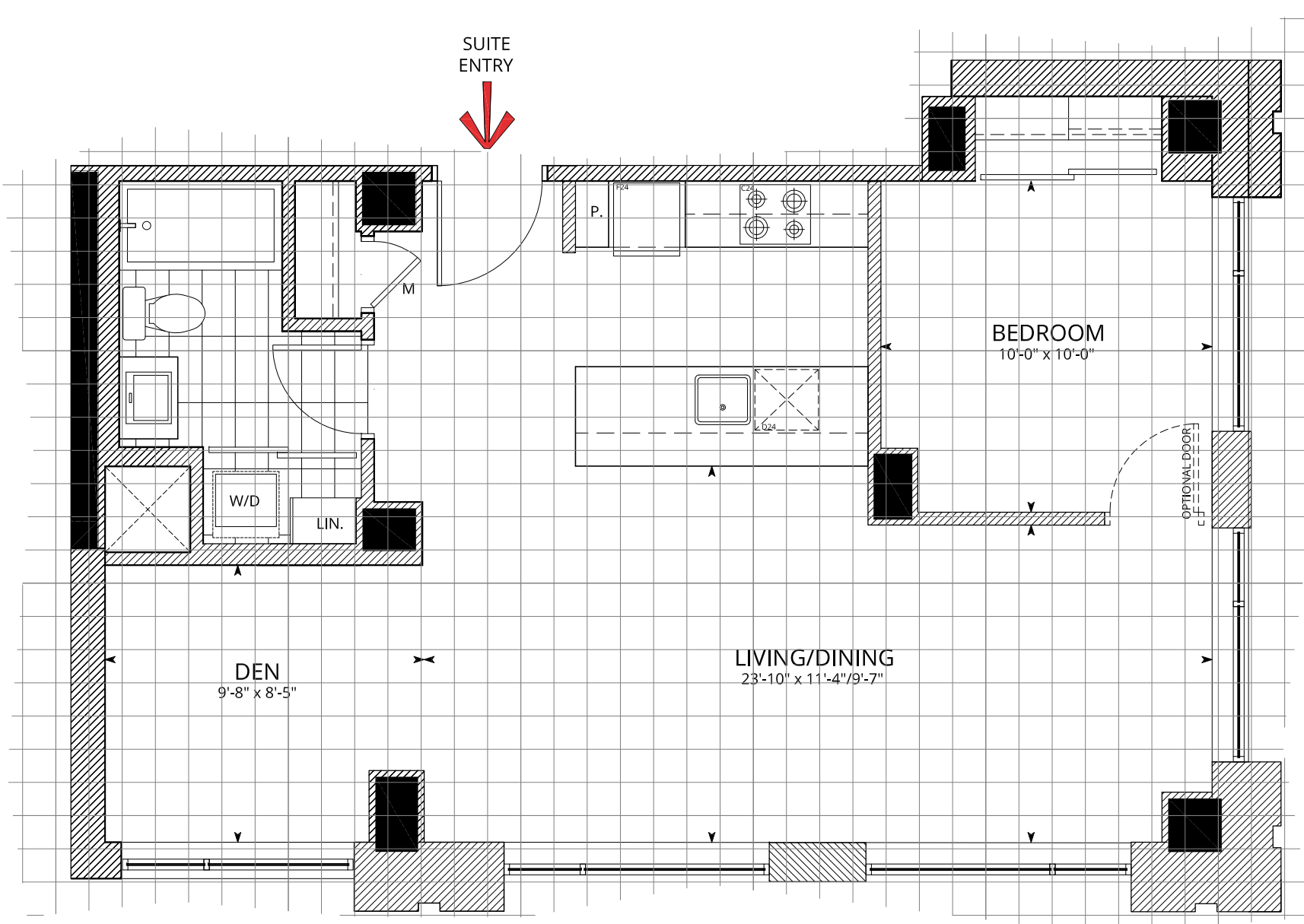
TOTAL AREA: 795 sq.ft.

LEGEND:

- PARTY WALLS, INTERIOR/EXTERIOR WALLS AND PLUMBING WALLS
- STRUCTURAL ELEMENTS
- WASHER/DRYER
- COMBINATION WASHER/DRYER
- HEAT PUMP/ HEAT RECOVERY VENTILATOR (HRV)
- TUB
- FREESTANDING TUB
- SHOWER
- BATHROOM VANITY
- PEDESTAL SINK
- WATER CLOSET
- SINGLE BOWL UNDERMOUNT KITCHEN SINK
- DOUBLE BOWL UNDERMOUNT KITCHEN SINK
- DISHWASHER
D24-24" WIDE
D18-18" WIDE
- COOKTOP WITH OVEN BELOW
C30-30" WIDE
C24-24" WIDE
- REFRIGERATOR
F30-30" WIDE
F24-24" WIDE
- PANTRY
- LINEN CLOSET
- MIRRORED PANEL DOOR
- DOUBLE ROD AND SHELF
- SINGLE ROD AND SHELF
- TILED FLOOR
12" x 24"
- WINDOW
- PRIVACY SCREEN



2 KEY PLAN
T12.1



1 THE CAMERON
T12.1



A PROGRAM BY ENBRIDGE GAS DISTRIBUTION

- AN INTEGRATED DESIGN PROCESS WHERE BUILDING SCIENCE EXPERTS FROM ENBRIDGE AND DOMICILE'S DESIGN TEAM WORKED TOGETHER TO IDENTIFY THE OPTIMAL MIX OF DESIGN ELEMENTS AND TECHNOLOGIES TO MAXIMIZE THE ENVIRONMENTAL PERFORMANCE OF THIS PROJECT
- THE RESULT WILL BE A BUILDING WITH ENERGY SAVINGS THAT EXCEEDS THE ONTARIO BUILDING CODE BY AT LEAST 15%
- AFTER THE BUILDING IS COMPLETE, A COMMISSIONING REVIEW OF THE BUILDING IS CONDUCTED TO ENSURE ALL SYSTEMS AND TECHNOLOGIES ARE WORKING AS INTENDED

Actual usable space may vary slightly from stated floor area
All dimensions are approximate E. & O.E.

DESIGN NOTES/QUESTIONS:

- INCLUDES LARGE LOCKER
- OPTIONAL BEDROOM DOOR AT NO CHARGE

domicile



DRAWING TITLE:
LAYOUT FEATURES
THE CAMERON

OPTION: STANDARD DATE: 2017.08.04

REV: 02 DRAWING NO. PHASE 2 T12.1