

domicile
EXTENDED
WARRANTY

THE BRUNSWICK

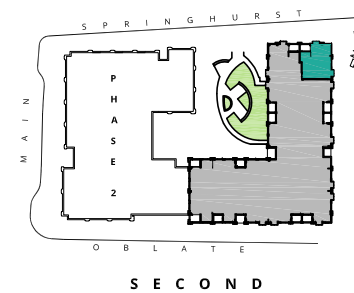
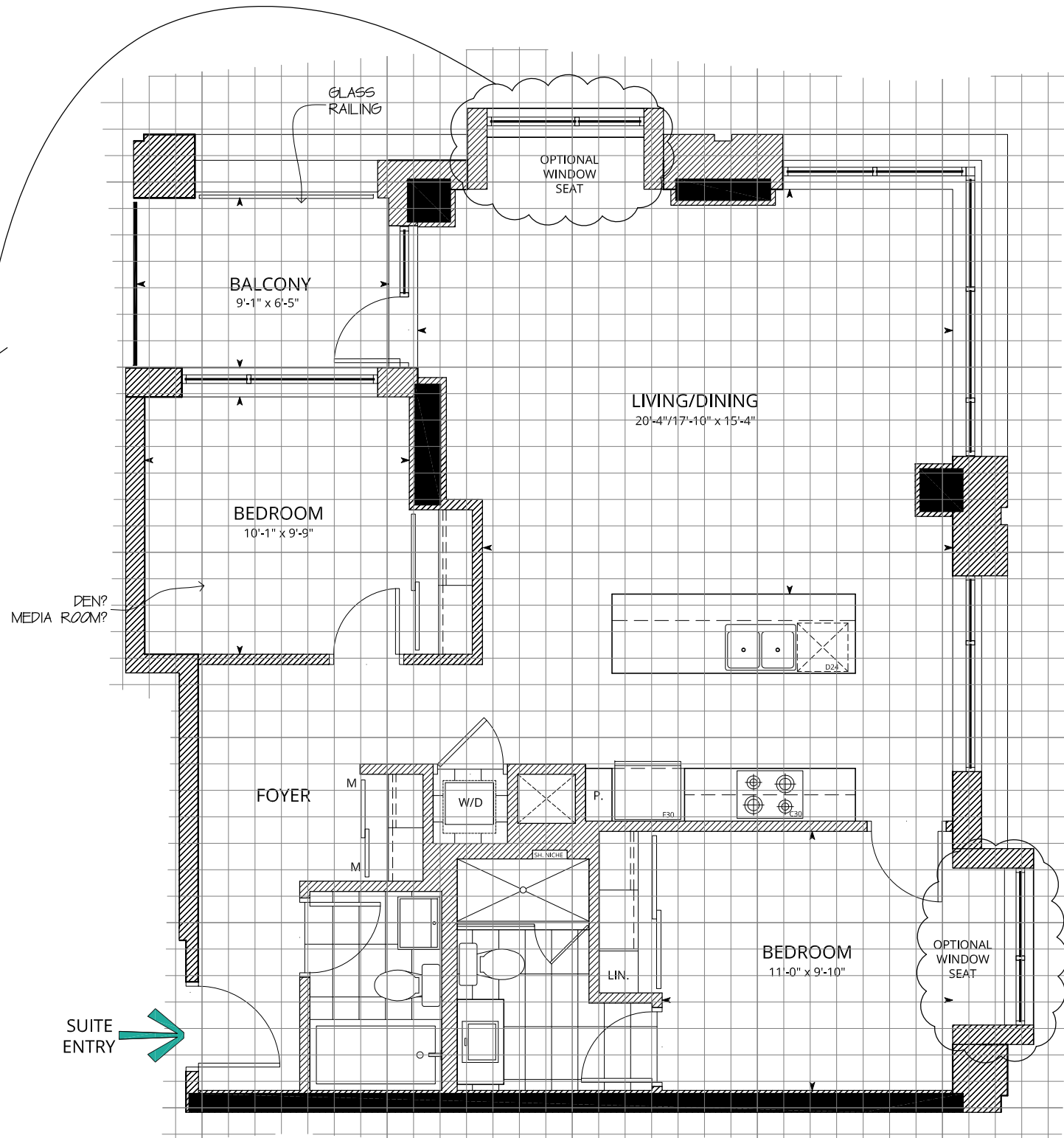
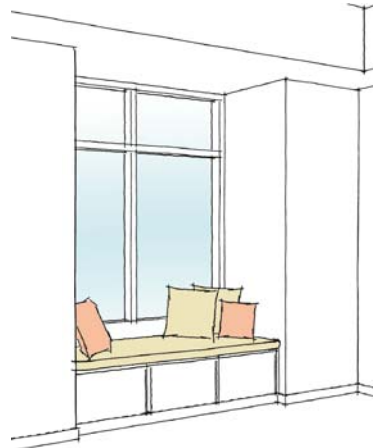
SUITES 212
1065 sq.ft.

THE DOMICILE EXTENDED WARRANTY IS A COMMITMENT TO OUR WORK, OUR TEAM AND MOST IMPORTANTLY OUR CUSTOMERS

A REMARKABLE 4-YEAR WARRANTY LIKE NO OTHER

THE SAME PROTECTION AS THE STANDARD WARRANTY, BUT FOR AT LEAST TWICE AS LONG

INCLUDED IN THE PRICE OF YOUR NEW HOME



2 KEY PLAN
T8.1

DESIGN NOTES/QUESTIONS:



A PROGRAM BY ENBRIDGE GAS DISTRIBUTION

- AN INTEGRATED DESIGN PROCESS WHERE BUILDING SCIENCE EXPERTS FROM ENBRIDGE AND DOMICILE'S DESIGN TEAM WORKED TOGETHER TO IDENTIFY THE OPTIMAL MIX OF DESIGN ELEMENTS AND TECHNOLOGIES TO MAXIMIZE THE ENVIRONMENTAL PERFORMANCE OF THIS PROJECT
- THE RESULT WILL BE A BUILDING WITH ENERGY SAVINGS THAT EXCEEDS THE ONTARIO BUILDING CODE BY AT LEAST 25%
- AFTER THE BUILDING IS COMPLETE, A COMMISSIONING REVIEW OF THE BUILDING IS CONDUCTED TO ENSURE ALL SYSTEMS AND TECHNOLOGIES ARE WORKING AS INTENDED

Actual usable space may vary slightly from stated floor area
All dimensions are approximate E. & O.E.

1 THE BRUNSWICK
T8.1

SUITES 212

FACTS:

TWO BEDROOM

SUITE AREA: 1065 sq.ft.

BALCONY AREA: 63 sq.ft.

TOTAL AREA: 1128 sq.ft.

LEGEND:

- PARTY WALLS, INTERIOR WALLS AND PLUMBING WALLS
- STRUCTURAL ELEMENTS
- WASHER/DRYER
- COMBINATION WASHER/DRYER
- HEAT PUMP/ HEAT RECOVERY VENTILATOR (HRV)
- TUB
- FREESTANDING TUB
- SHOWER
- TUB/SHOWER COMBINATION
- BATHROOM VANITY
- PEDESTAL SINK
- WATER CLOSET
- SINGLE BOWL UNDERMOUNT KITCHEN SINK
- DOUBLE BOWL UNDERMOUNT KITCHEN SINK
- DISHWASHER
D24 - 24" WIDE
D18-18" WIDE
- COOKTOP WITH OVEN BELOW
C30 - 30" WIDE
C24 - 24" WIDE
- REFRIGERATOR
F30 - 30" WIDE
F24 - 24" WIDE
- PANTRY
- LINEN CLOSET
- MIRRORING PANEL SLIDERS
- DOUBLE ROD AND SHELF
- SINGLE ROD AND SHELF
- TILED FLOOR
12" x 24"
- WINDOW
- SHOWER NICHE
- PRIVACY SCREEN

domicile



DRAWING TITLE:
LAYOUT FEATURES
THE BRUNSWICK

OPTION: STANDARD DATE: 2017.10.04

REV: 06 DRAWING NO. T8.1 26