

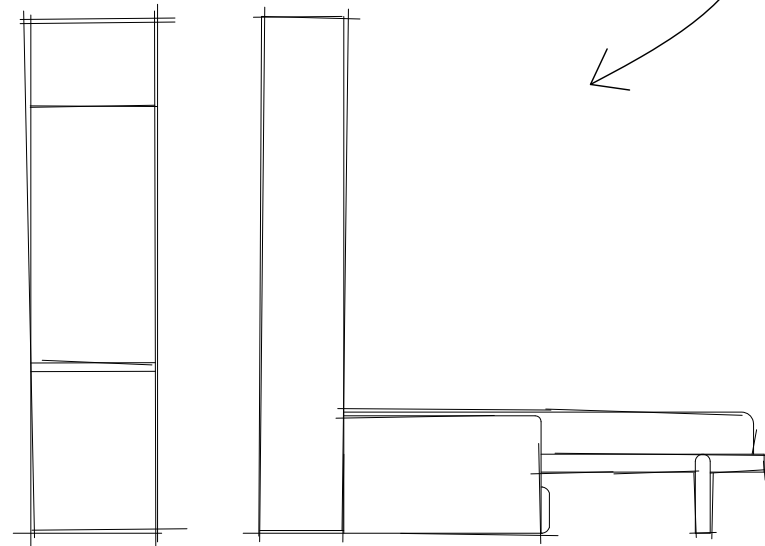


THE DOMICILE EXTENDED WARRANTY IS A COMMITMENT TO OUR WORK, OUR TEAM AND MOST IMPORTANTLY OUR CUSTOMERS

A REMARKABLE 4-YEAR WARRANTY LIKE NO OTHER

THE SAME PROTECTION AS THE STANDARD WARRANTY, BUT FOR AT LEAST TWICE AS LONG

INCLUDED IN THE PRICE OF YOUR NEW HOME



OPTIONAL WARDROBE WITH 1 ROD & 1 SHELF

OPTIONAL SOFA & BED (RESOURCE FURNITURE)

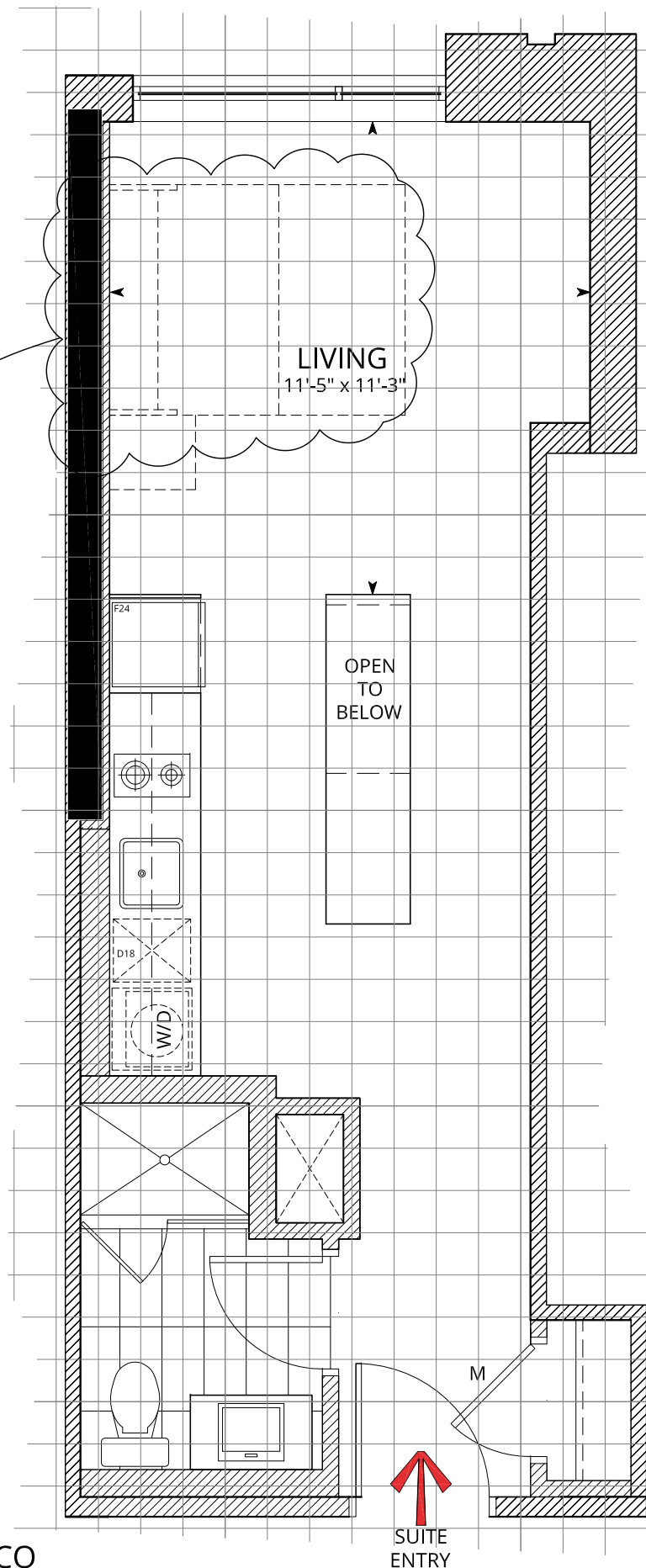


A PROGRAM BY ENBRIDGE GAS DISTRIBUTION

- AN INTEGRATED DESIGN PROCESS WHERE BUILDING SCIENCE EXPERTS FROM ENBRIDGE AND DOMICILE'S DESIGN TEAM WORKED TOGETHER TO IDENTIFY THE OPTIMAL MIX OF DESIGN ELEMENTS AND TECHNOLOGIES TO MAXIMIZE THE ENVIRONMENTAL PERFORMANCE OF THIS PROJECT
- THE RESULT WILL BE A BUILDING WITH ENERGY SAVINGS THAT EXCEEDS THE ONTARIO BUILDING CODE BY AT LEAST 15%
- AFTER THE BUILDING IS COMPLETE, A COMMISSIONING REVIEW OF THE BUILDING IS CONDUCTED TO ENSURE ALL SYSTEMS AND TECHNOLOGIES ARE WORKING AS INTENDED

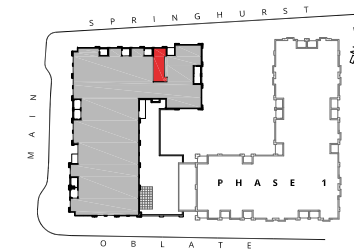
Actual usable space may vary slightly from stated floor area
All dimensions are approximate E. & O.E.

1 THE MARCO
T4.1

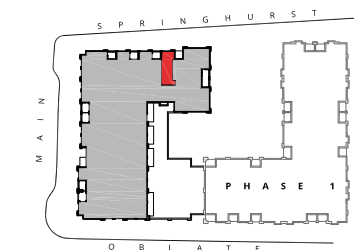


THE MARCO

427 sq.ft.



THIRD



FOURTH

2 KEY PLAN
T4.1

DESIGN NOTES/QUESTIONS:

SUITES

303, 403

FACTS:

PIED À TERRE

SUITE AREA: 427 sq.ft.

TERRACE AREA: N/A sq.ft.

TOTAL AREA: 427 sq.ft.

LEGEND:

- PARTY WALLS, INTERIOR/EXTERIOR WALLS AND PLUMBING WALLS
- STRUCTURAL ELEMENTS
- WASHER/DRYER
- COMBINATION WASHER/DRYER
- HEAT PUMP/ HEAT RECOVERY VENTILATOR (HRV)
- TUB
- FREESTANDING TUB
- SHOWER
- BATHROOM VANITY
- PEDESTAL SINK
- WATER CLOSET
- SINGLE BOWL UNDERMOUNT KITCHEN SINK
- DOUBLE BOWL UNDERMOUNT KITCHEN SINK
- DISHWASHER
D24-24" WIDE
D18-18" WIDE
- COOKTOP WITH OVEN BELOW
C30-30" WIDE
C24-24" WIDE
- REFRIGERATOR
F30-30" WIDE
F24-24" WIDE
- P. PANTRY
- LIN. LINEN CLOSET
- M. MIRRORED PANEL DOOR
- DOUBLE ROD AND SHELF
- SINGLE ROD AND SHELF
- TILED FLOOR
12" x 24"
- WINDOW
- PRIVACY SCREEN

domicile



DRAWING TITLE:
LAYOUT FEATURES
THE MARCO

OPTION: STANDARD DATE: 2016.10.18

REV: 01 DRAWING NO. PHASE 2 T4.1